

## 8 HORNSEY CHAMBERS SOUTHWOLD ROAD LONDON, E5 9PY

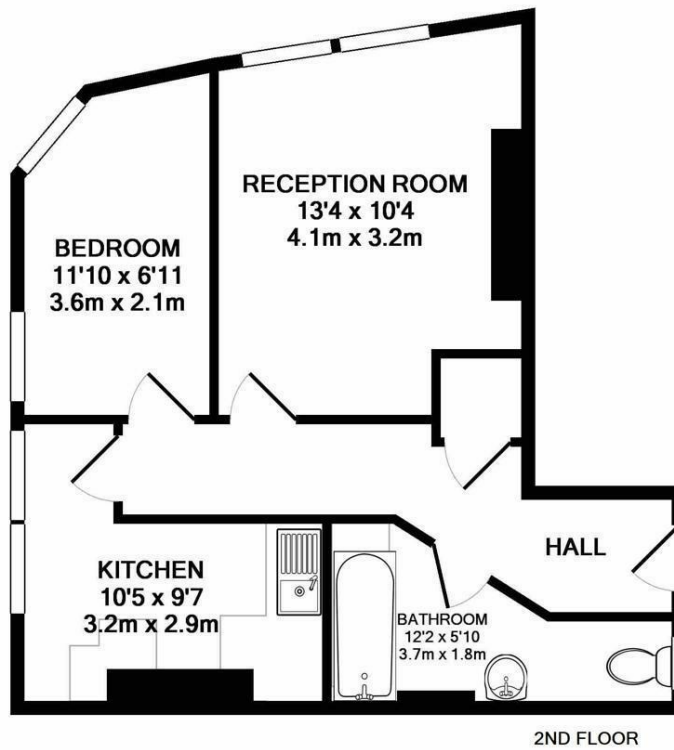
£1,750 PER MONTH

(Living room, converted in to the second bedroom) A two bedroom, second floor apartments situated moments from Clapton station.

The property comprises of a separate kitchen living area, two double bedrooms and a tiled bathroom.

Located moments from the vibrant Upper and Lower Clapton Roads, Chatsworth Road, Millfields Park and the River Lea

**Hemmingfords**



**8 HORNSEY CHAMBERS E5**  
**TOTAL APPROX. FLOOR AREA 432 SQ.FT. (40.1 SQ.M.)**  
 Measurements are approximate. Not to scale. Illustrative purposes only



Energy Efficiency Rating		Current	Potential
Very energy efficient - lower running costs			
(92 plus) A			
(81-91) B			78
(69-80) C		61	
(55-68) D			
(39-54) E			
(21-38) F			
(1-20) G			
Not energy efficient - higher running costs			
<b>England &amp; Wales</b>		EU Directive 2002/91/EC	

Agents Note: Whilst every care has been taken to prepare these particulars, they are for guidance purposes only. All measurements are approximate and are for general guidance purposes only and whilst every care has been taken to ensure their accuracy, they should not be relied upon and potential buyers/tenants are advised to recheck the measurements

Hemmingfords Lettings & Sales  
 Second Floor  
 34 Upper Street  
 London  
 N1 0PN

020 3890 7470  
 info@hemmingfords.co.uk  
 www.hemmingfords.co.uk

**Hemmingfords**